

ANNEX 1 – IPC Status of Rural Population per District per Livelihood System (FSNAU Projections, September-December 2014)

Region	District	Livelihood system	Estimated Population of Affected Livelihood Zones	Stressed IPC 2	Crisis IPC 3	Emergency IPC 4
Awdal	Baki	Agro-Pastoral	8,678	3,471	1,302	0
		Pastoral	8,245	3,607	0	0
	Borama	Agro-Pastoral	66,348	26,539	9,952	0
		Pastoral	66,348	14,928	0	0
	Lughaye	Agro-Pastoral	1,133	0	0	0
		Fishing	566	0	0	0
	Zeylac	Pastoral	20,395	8,923	0	0
		Fishing	584	0	0	0
Awdal Total			194,513	67,188	11,254	0
Bakool	Coel Barde	Pastoral	23,844	8,345	0	0
	Rab Dhuure	Agro-Pastoral	26,621	7,986	2,662	0
		Pastoral	4,698	1,644	0	0
	Tayeeglow	Agro-Pastoral	62,239	17,505	5,835	0
		Pastoral	2,593	908	0	0
Waajid	Agro-Pastoral	55,255	15,333	5,111	0	
Xudur	Agro-Pastoral	73,939	20,795	6,932	0	
Bakool Total			249,189	72,517	20,540	0
Bari	Bandarbayla	Pastoral	8,976	2,020	673	0
	Bossaso	Pastoral	57,725	15,478	4,293	0
	Caluula	Pastoral	27,002	7,189	2,396	0
	Iskushuban	Pastoral	36,519	10,339	1,803	0
	Qandala	Pastoral	26,902	7,163	2,119	0
	Qardho	Pastoral	30,881	6,948	0	0
Bari Total			188,005	49,137	11,285	0
Bay	Baydhaba/Bardaale	Agro-Pastoral	247,670	78,016	0	0
	Buur Hakaba	Agro-Pastoral	100,493	32,660	0	0
		Pastoral	0	0	0	0
	Diinsoor	Agro-Pastoral	63,615	20,357	0	0
Qansax Dheere	Agro-Pastoral	81,971	26,026	0	0	
Bay Total			493,749	157,059	0	0
Galgaduud	Cabudwaaq	Destitute pastoral	3,918	0	2,978	940
		Pastoral	28,736	9,045	0	0
	Cadaado	Destitute pastoral	3,993	0	3,035	958
		Pastoral	32,311	10,456	0	0
	Ceel Buur	Agro-Pastoral	21,208	3,976	1,325	0
		Destitute pastoral	3,314	0	2,518	795
	Ceel Dheer	Pastoral	41,753	14,738	290	0
		Agro-Pastoral	39,736	7,451	2,484	0
	Dhuusamarreeb	Destitute pastoral	4,042	0	3,072	970
		Pastoral	17,628	3,526	3,526	0
Dhuusamarreeb	Destitute pastoral	5,538	0	4,209	1,329	
	Pastoral	68,903	24,085	362	0	
Galgaduud Total			271,080	73,276	23,800	4,994

Region	District	Livelihood system	Estimated Population of Affected Livelihood Zones	Stressed IPC 2	Crisis IPC 3	Emergency IPC 4	
Gedo	Bardheere	Agro-Pastoral	31,042	8,980	333	0	
		Pastoral	31,042	8,148	0	0	
		Riverine	18,544	6,491	0	0	
	Belet Xaawo	Agro-Pastoral	4,985	1,122	374	0	
		Pastoral	34,914	10,474	3,491	0	
		Riverine	2,493	872	0	0	
	Coel Waaq	Pastoral	15,437	4,052	0	0	
	Doolow	Agro-Pastoral	3,288	740	247	0	
		Pastoral	15,341	4,602	1,534	0	
		Riverine	2,192	767	0	0	
	Garbahaarey/Buur Dhuubo	Agro-Pastoral	8,352	1,879	626	0	
		Pastoral	31,419	9,426	3,142	0	
Luuq	Agro-Pastoral	10,672	2,401	800	0		
	Pastoral	29,349	8,805	2,935	0		
	Riverine	8,006	2,802	0	0		
Gedo Total			247,076	71,562	13,482	0	
Hiraan	Belet Weyne/Matabaan	Agro-Pastoral	75,925	41,759	13,287	0	
		Destitute pastoral	4,067	0	4,067	0	
		Pastoral	40,674	12,948	0	0	
		Riverine	14,914	8,538	2,834	0	
	Bulo Burto/Maxaas	Agro-Pastoral	46,669	25,668	8,167	0	
		Pastoral	28,003	9,801	0	0	
		Riverine	14,001	8,016	2,660	0	
	Jalalaqsi	Agro-Pastoral	14,133	7,773	2,473	0	
		Pastoral	18,594	6,508	0	0	
		Riverine	3,717	2,128	706	0	
	Hiraan Total			260,698	123,139	34,195	0
	Juba Dhexe (Middle)	Bu'aale	Agro-Pastoral	12,081	4,228	2,718	0
Pastoral			9,662	2,174	0	0	
Riverine			24,158	5,435	1,812	0	
Jilib		Agro-Pastoral	17,569	5,710	1,977	0	
		Pastoral	30,748	7,689	0	0	
		Riverine	35,147	7,908	2,636	0	
Saakow/Salagle		Agro-Pastoral	25,946	9,081	5,838	0	
		Pastoral	11,530	2,018	0	0	
		Riverine	17,297	4,541	1,514	0	
Juba Dhexe (Middle) Total			184,138	48,784	16,495	0	
Juba Hoose (Lower)	Afmadow/Xagar	Agro-Pastoral	20,943	6,865	2,618	0	
		Pastoral	23,269	5,294	0	0	
	Badhaadhe	Agro-Pastoral	13,568	4,070	0	0	
		Pastoral	19,260	5,067	0	0	
	Jamaame	Agro-Pastoral	26,684	8,005	0	0	
		Pastoral	33,354	13,342	0	0	
		Riverine	46,696	14,009	0	0	
	Kismaayo	Agro-Pastoral	20,625	6,187	0	0	
		Pastoral	46,400	10,053	0	0	
		Riverine	10,309	3,093	0	0	
	Juba Hoose (Lower) Total			261,108	75,985	2,618	0

Region	District	Livelihood system	Estimated Population of Affected Livelihood Zones	Stressed IPC 2	Crisis IPC 3	Emergency IPC 4
Mudug	Gaalkacyo	Destitute pastoral	4,972	0	2,834	2,138
		Pastoral	77,895	25,192	0	0
	Galdogob	Destitute pastoral	2,002	0	1,141	861
		Pastoral	31,364	9,409	0	0
	Hobyo	Agro-Pastoral	10,888	2,041	680	0
Destitute pastoral		3,491	0	1,990	1,501	
Jariiban	Pastoral	40,059	12,095	2,568	0	
	Destitute pastoral	1,643	0	937	707	
Xarardheere	Pastoral	31,223	10,435	526	0	
	Agro-Pastoral	20,863	3,912	1,304	0	
	Destitute pastoral	6,568	0	3,744	2,824	
	Pastoral	24,726	7,136	2,024	0	
Mudug Total			255,694	70,220	17,748	8,031
Nugaal	Burtinle	Pastoral	26,005	7,802	0	0
		Pastoral	14,732	3,315	0	0
	Eyl	Pastoral	25,259	6,455	3,507	0
	Garoowe	Destitute pastoral	1,476	0	974	502
Pastoral		23,120	6,069	0	0	
Nugaal Total			90,592	23,640	4,481	502
Sanaag	Ceel Afweyn	Pastoral	53,638	12,069	0	0
		Pastoral	7,052	0	0	0
	Ceerigaabo	Destitute pastoral	1,675	0	871	804
		Fishing	13,224	0	0	0
	Laasqoray/Badhan	Pastoral	61,798	14,731	0	0
Destitute pastoral		4,614	0	2,399	2,215	
	Fishing	1,969	0	0	0	
	Pastoral	70,319	16,414	0	0	
Sanaag Total			214,288	43,213	3,270	3,019
Shabelle Dhexe (Middle)	Adan Yabaal	Agro-Pastoral	23,462	9,092	0	0
		Destitute pastoral	16,127	0	12,741	3,387
		Pastoral	16,127	6,451	0	0
	Balcad/Warsheikh	Agro-Pastoral	49,865	21,816	0	0
		Destitute pastoral	19,390	0	15,318	4,072
		Pastoral	19,390	7,756	0	0
		Riverine	16,622	16,622	0	0
	Cadale	Agro-Pastoral	13,233	5,128	0	0
		Destitute pastoral	11,344	0	8,961	2,382
		Pastoral	11,344	4,537	0	0
	Jowhar/Mahaday	Agro-Pastoral	111,084	48,599	0	0
Pastoral		74,048	25,917	0	0	
Riverine		37,035	32,406	9,259	0	
Shabelle Dhexe (Middle) Total			419,070	178,323	46,279	9,841

Region	District	Livelihood system	Estimated Population of Affected Livelihood Zones	Stressed IPC 2	Crisis IPC 3	Emergency IPC 4
Shabelle Hoose (Lower)	Afgooye/Aw Dheegle	Agro-Pastoral	136,597	40,979	0	0
		Pastoral	21,004	6,301	0	0
		Riverine	21,004	7,351	0	0
	Baraawe	Agro-Pastoral	33,791	10,137	0	0
		Pastoral	5,913	1,014	0	0
		Riverine	2,534	887	0	0
	Kurtunwaarey	Agro-Pastoral	32,855	9,856	0	0
		Pastoral	5,008	1,753	0	0
		Riverine	10,156	3,555	0	0
	Marka	Agro-Pastoral	75,914	22,774	0	0
		Pastoral	7,587	2,276	0	0
		Riverine	45,538	11,384	15,938	0
	Qoryooley	Agro-Pastoral	70,338	21,101	0	0
		Pastoral	11,715	4,100	0	0
		Riverine	29,311	10,992	8,793	5,129
	Sablaale	Agro-Pastoral	22,779	6,834	0	0
		Pastoral	5,257	1,665	0	0
		Riverine	7,009	2,453	0	0
	Wanla Weyn	Agro-Pastoral	106,902	46,769	0	0
		Pastoral	26,725	9,354	0	0
	Shabelle Hoose (Lower) Total			677,937	221,536	24,732
Sool	Caynabo	Pastoral	24,026	5,406	0	0
	Laas Caanood	Pastoral	50,606	11,386	0	0
	Taleex	Destitute pastoral	420	0	420	0
		Pastoral	20,563	4,627	0	0
Xudun	Destitute pastoral	311	0	311	0	
	Pastoral	15,217	3,424	0	0	
Sool Total			111,143	24,843	730	0
Togdheer	Burco	Agro-Pastoral	11,984	3,595	0	0
		Pastoral	179,764	40,447	0	0
	Buuhoodle	Pastoral	28,821	6,485	0	0
	Owdweyne	Agro-Pastoral	4,178	1,253	0	0
Pastoral		26,746	6,018	0	0	
Sheikh	Agro-Pastoral	3,702	1,111	0	0	
	Pastoral	23,698	5,332	0	0	
Togdheer Total			278,893	64,241	0	0
Woqooyi Galbeed	Berbera	Fishing	1,437	0	0	0
		Pastoral	17,246	7,545	0	0
	Gebiley	Agro-Pastoral	35,813	14,325	5,372	0
Pastoral		17,904	4,028	0	0	
Hargeysa	Agro-Pastoral	34,378	13,751	5,157	0	
	Pastoral	103,135	23,205	0	0	
Woqooyi Galbeed Total			209,913	62,855	10,529	0
Grand Total			4,607,086	1,427,518	241,437	31,515

ANNEX 2 – Planned Response Targets

Region	District	Access Level *	Rural pop in IPC 3 & 4 (indiv)	Rural pop in IPC 3 & 4 (HH)	% of Rural pop in Phases 3-4	FAO planned response targets with secure funding (HHs)			Additional requirements for FAO's proposed response			
						CFW (Phase 4)	Ag inputs Deyr 2014	Livestock distribution	CFW (Phase 4 extension & Phase 5)	Ag inputs Gu 2015	Livestock distribution	Fishing inputs distribution
Hiraan	Belet Weyne/Matabaan		20,188	3,365	15%		4,956	460	1,800	4,500	750	600
Shabelle Dhexe (Middle)	Balcad/Warsheikh		19,390	3,232	18%				1,700		700	600
Shabelle Dhexe (Middle)	Adan Yabaal		16,128	2,688	29%						600	
Shabelle Hoose (Lower)	Marka		15,938	2,656	12%				1,400		1000	
Shabelle Hoose (Lower)	Qoryooley		13,922	2,320	13%				1,200		860	
Shabelle Dhexe (Middle)	Cadale		11,343	1,891	32%				1,000		400	
Hiraan	Bulo Burto/Maxaas		10,827	1,805	12%				950		500	
Galgaduud	Ceel Dheer		10,051	1,675	16%						200	
Awdal	Borama		9,952	1,659	7.5%				850		850	
Mudug	Xarardheere		9,896	1,649	19%						450	
Shabelle Dhexe (Middle)	Jowhar/Mahaday		9,259	1,543	4%	3,869	2,500		800	2,500	800	1,500
Juba Dhexe (Middle)	Saakow/Salagle		7,351	1,225	13%						620	
Bakool	Xudur		6,932	1,155	9%						600	
Mudug	Hobyo		6,739	1,123	12%				600		400	
Galgaduud	Dhuusamarreeb		5,900	983	7.9%				500		400	
Bakool	Tayeeglow		5,835	973	9%	3,816					500	
Woqooyi Galbeed	Gebiley		5,372	895	10.0%				450		700	
Woqooyi Galbeed	Hargeysa		5,157	860	3.8%				450		700	
Bakool	Waajid		5,111	852	9.2%						400	
Mudug	Gaalkacyo		4,972	829	6.0%				450		400	
Galgaduud	Ceel Buur		4,929	822	7%				450		300	
Sanaag	Laasqoray/Badhan		4,614	769	6.0%	2,000			400		600	
Juba Dhexe (Middle)	Jilib		4,613	769	5.5%						330	
Juba Dhexe (Middle)	Bu'aale		4,530	755	9.9%						450	
Bari	Bossaso		4,293	716	7%				350		500	
Galgaduud	Cadaado		3,993	666	11.0%				350		300	
Galgaduud	Cabudwaaq		3,918	653	12.0%				350		300	
Gedo	Belet Xaawo		3,865	644	9.1%	1,289	4,400		350	4,400	350	
Gedo	Garbahaarey/Buur Dhuubo		3,768	628	9.5%		1,500		350	1,500	350	
Gedo	Luuq		3,735	623	7.8%	1,789	1,800		300	1,800	400	
Nugaal	Eyl		3,507	585	14%	450		190	300		600	
Hiraan	Jalalaqsi		3,180	530	9%						300	
Bakool	Rab Dhuure		2,662	444	8%	1,803			250		300	

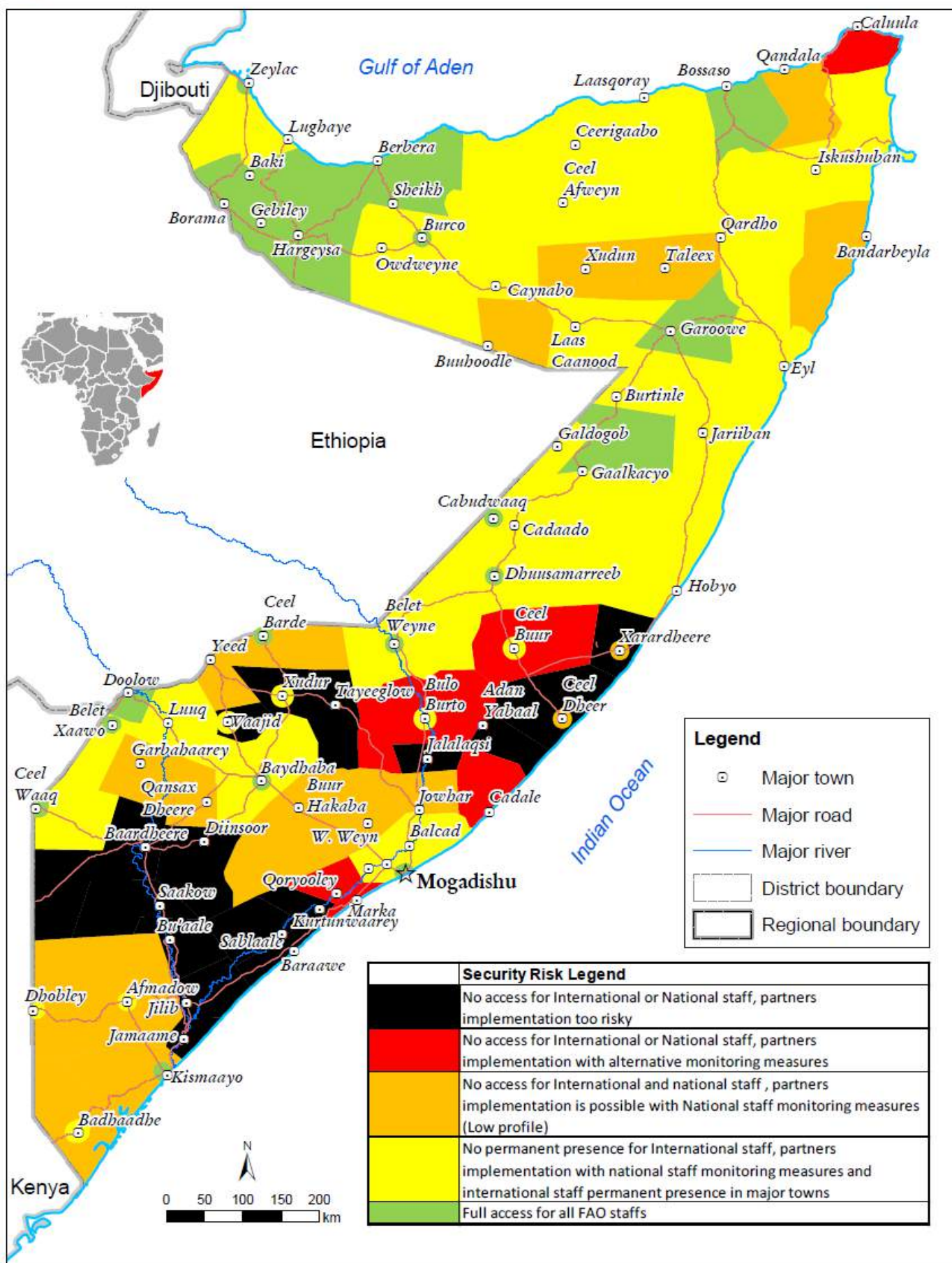
Juba Hoose (Lower)	Afmadow/Xagar		2,618	436	5.9%	893			250		440	
Bari	Caluula		2,396	399	9%				200		300	
Mudug	Jariiban		2,170	362	6.6%	1,271			200		300	
Bari	Qandala		2,119	353	8%				200		300	
Mudug	Galdogob		2,002	334	6.0%				150		200	
Bari	Iskushuban		1,803	301	5%	1,113		800	150		300	
Gedo	Doolow		1,781	297	8.6%	1,189	2,700	800	150	2,700	0	
Sanaag	Ceerigaabo		1,675	279	2.0%				150		280	
Nugaal	Garoowe		1,476	246	6.0%	1,300			100		250	
Awdal	Baki		1,302	217	7.7%				100		250	
Bari	Bandarbayla		673	112	7%			100	60		150	
Sool	Taleex		420	70	2%						100	
Sool	Xudum		300	50	2%						75	
Shabelle Hoose (Lower)	Afgoye *					1,800	3,050		1,800	3,050		900
Bay	Baydhaba/Bardale *					2,000	2,000		550	2,000		
Shabelle Hoose (Lower)	Wanla Weyn *					800						
Nugaal	Dan Gorayo *					380		210				
Bari	Qardho *					548						
Bakool	Ceel Barde *					909						
Gedo	Ceel Waaq *					1,089						
Contingency **									10,000	10,000		
TOTAL						28,308	22,906	2,560	29,660	32,450	19,855	3,600

* The emergency response for Afgoye, Baidhaba/Bardale, Wanla Weyne, Dan Gorayo, Qardho, Ceel Barde and Ceel Waaq consists of on-going activities that were programmed based on requirements as foreseen in July 2014, and reflected in the original Emergency Response Plan. These “borderline” districts are maintained in the revised Emergency Response Plan considering the risk of relapse over the coming months.

** The geographical location and the number of beneficiaries to be targeted in 2015 are subject to review following the FSNAU Post Deyr 2014-15 Analysis. Considering the risk of relapse into emergency conditions, including as a result of potential El Nino conditions, contingency allocations for 10,000 agricultural packages and 10,000 CFW beneficiaries are included in the plan (either through extension of Phase 4 or additional beneficiaries in Phase 5).



Security Risk Per District - July, 2014



Status of River Breakage Points in Middle Shabelle -08th September 2014					
NEAREST SETTLEMENT	STATUS	DISTRICT	LAT	LONG	OBSERVATION
Kulmis Yerow	Open	Balcad	2.61238	45.51027	The analysis of the image of 2012 shows that in this point there was a breakage. Confirmation is given by previous report and DEM. Field observers reported that the breakage is open in Sept 2014. No suitable image for 2014 are available to confirm.
Timire	Open	Jowhar	2.86824	45.52820	Image of 29MAY14 shows that a flood occurred in this area. The panchromatic image, clouds and trees hinder the breakage detection. Field observers reported a broken canal in the area causing floods in Sept 2014.
Axmed Cigoow	Potential	Jowhar	2.90883	45.54837	June 13 shows potential to break. DEM and previous records confirm the vulnerability. The village is about 30 m from this point.
Axmed Cigoow	Potential	Jowhar	2.91176	45.53948	weak river embankment , in 2012-2013 there are signs of floods close to this point.
Baalguri/Gacan Libaax	Potential	Jowhar	2.76852	45.50329	There is evidence of flooding at this point in the image of 28 DEC 2012, 20SEP and 27DEC 2013.
Baalguri/Gacan Libaax	Potential	Jowhar	2.76362	45.50633	There is evidence of flooding in this point as per images of DEC2013 and FEB-MAR 2014. DEM confirms that this is a vulnerable point.
Baaroweyne	Potential	Jowhar	2.86824	45.52820	The image of June 2013 shows that water overflow occurred from this point and the surrounding is flooded
Bacadley	Potential	Balcad	2.65769	45.49596	The presence of an inlet (20SEP13) and signs of floods show that this is a vulnerable area for possible overflows. The presence of previous records and DEM confirm it.
Balcad	Potential	Balcad	2.36192	45.39667	The image acquired in FEB 2014 shows signs of flooding. DEM confirms that this is a vulnerable point.
Barrey	Potential	Jowhar	2.93859	45.53001	In June 2013 the area was flooded. Lack of vegetation in shows that this is a vulnerable area as DEM confirmed.
Bayaxaaw	Potential	Jowhar	2.73922	45.50015	Evidence of flooding inside the village as per image of 18MAR14. On 22SEP13 water spillage from this point is detected.
Bayaxaaw	Potential	Jowhar	2.73402	45.50126	There is evidence of flooding in this point as per the images of 28DEC12, 27DEC13.

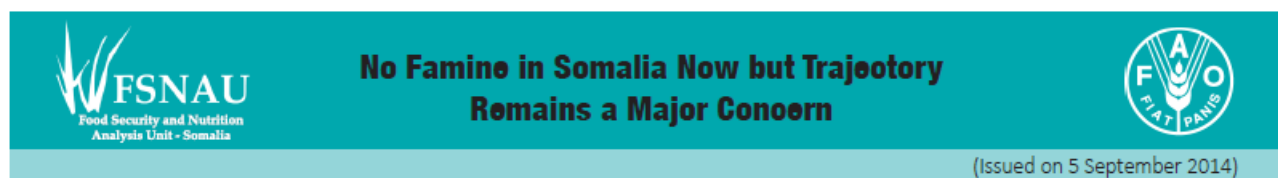
Boodal	Potential	Balcad	2.64383	45.50143	The overview of the image 20SEP13 shows that from this point there was a flood. A previously reported point confirms this observation.
Boodal	Potential	Balcad	2.64497	45.50618	Image 27DEC13 shows that a flood took place from here. Previously reported points and DEM confirm the vulnerability of the area.
Bullo Geesaale	Potential	Jowhar	2.82459	45.53590	The analysis the Dec 2012 image shows that a spillage branched from this point before, and signs are still evident.
Buulo Shiikh	Potential	Balcad	2.47241	45.46711	The image of 3JUN13 shows the water level at same level of the field and no embankment is detected. DEM and previous report confirm the vulnerability.
Deymosame	Potential	Balcad	2.67444	45.50355	There is evidence of flooding in this point as per images of JUN-SEP-DEC 2013, and FEB 2014. Area potentially subject to floods as both DEM and records of previous breakages confirm.
Gaalaay	Potential	Jowhar	2.84481	45.53003	The image 3JUN13 shows that a spillage took place from here. In May 2014 the surrounding area is flooded. Previous reports shows that this is a vulnerable area.
Gaashaanle	Potential	Balcad	2.68181	45.50727	From this point were several major flooding took place, given the evidences of branching on the land surface. However, the breakage is closed in 2012-13-14
Gaashaanle	Potential	Balcad	2.66757	45.50532	DEM and old records shows that this is a potential flooding area. Images 2012-2013-2014 show that it is a humid area, as compared to the surrounding, probably due to periodic water overflows.
Gafay	Potential	Jowhar	2.84029	45.53087	In this point there is a canal which seems have caused some floods in the past as confirmed from older records. In May 2014 there are signs of floods indicating that this is a vulnerable area.
Gafay	Potential	Jowhar	2.85142	45.52943	Presence of flood signs are visible in Dec 2012 and May 2014. Absence of trees and DEM show that this is a vulnerable area.
Jowhar	Potential	Jowhar	2.77993	45.51332	DEM, images of 2012-2013 and older records show that this is a vulnerable point. However no breakages are evident in Sept 2014.
Kalundi	Potential	Jowhar	2.80065	45.52922	This point seems to be vulnerable given its position, DEM analysis and the evidence of flooding signs in June 2013 and May 2014
Kalundi	Potential	Jowhar	2.78812	45.52106	The image of MAY 2014 shows an increase of th erosion of the river bank. DEM confirms that it could a weak point.

Kulmis Yerow	Potential	Balcad	2.62115	45.51029	DEM shows that this is a vulnerable area. Images 2012-13-14 show that a breakage was present since an overflow occurred from here.
Kulmis-Weyne	Potential	Jowhar	2.93311	45.53094	June 2013 shows an overflow coming from this point. The village is about 50 m from this point. Previous records confirm vulnerability.
Kurshaale	Potential	Balcad	2.36001	45.40124	Aflat river bank, images of 2012-13-14 clearly show that from this point the water flows out. No new embankment noticed.
Lama-Waab	Potential	Jowhar	2.86950	45.53321	June 2013 shows potential to break. The village is about 50 m from this point. Previous records confirm vulnerability.
Magadley	Potential	Jowhar	2.86846	45.53097	Image of 28DEC12 shows that a flooding took place from this point and a breakage was present. In JUN13 there are signs of a recent flooding. Old records and DEM confirm vulnerability.
Mahadaay	Potential	Jowhar	2.96749	45.53149	June 2013 shows a flood. Probably the overflow took place from here. DEM and absence of river banks shows that this area is vulnerable.
Mahadaay	Potential	Jowhar	2.96614	45.53345	The image of June 2013 shows that the area is flooded. The flood may have occurred from this point.
Mandheere	Potential	Balcad	2.69056	45.50986	An overview of images 2013-2014 and the DEM show that this is a potential area for floods. Signs of past floods from this point are visible in all the images available (2012-13-14).
Mareerey	Potential	Balcad	2.39012	45.41905	DEM shows vulnerability. Images of 2012-2013-2014 show that this area is more humid as compared to the surrounding ones
Mareerey/Maxaa Deex	Potential	Balcad	2.37724	45.40804	The images 2012-2013-2014 show signs of floods deriving from this point (probably before 2012). DEM confirms.
Moyka	Potential	Jowhar	2.75662	45.49809	There is evidence of flooding in this point as per the images of Sep and Dec 2013
Moyka	Potential	Jowhar	2.75843	45.50123	Flooding is evident in the image of 18MAR14. Previous breakage reported in the area. DEM confirms that this is a potential flooding area.
Moyka	Potential	Jowhar	2.75136	45.49529	An overview of the area through images of 2012-2013-2014 shows that this area have been flooded in the past. Little vegetation on the river bank is an indicator of vulnerability. DEM confirms that it is a potential flooding area

Muryaale	Potential	Jowhar	2.87740	45.53474	The analysis of 2012 image shows that floods occurred from this point.
Muukay	Potential	Balcad	2.72458	45.50892	DEM and evidence of previous floods (before 2012) indicate that this is vulnerable point for floods.
Raqayle	Potential	Balcad	2.70517	45.51495	Potential breakage as a previous one was reported here. The image of 28DEC12 shows a major breakge here. DEM confirms that this is a high potential area for floods.
Raqayle	Potential	Balcad	2.70129	45.51096	The presence of a previously reported breakage and the DEM show that this is a potential flooded area. Signs of floods are present in 2012-13-14
Shaam	Potential	Jowhar	3.00049	45.51648	In this point a canal was opened in June 2013 causing a flood. In Dec 2013 there are still signs of the same flooding, but the canal was closed as confirmed by the image of June2014. However it is still a vulnerable area.
Shanlow	Potential	Balcad	2.54846	45.49342	Three previous breakage are reported here. The lack of trees in this portion of the oxbow is a sign of past flooding. In DEC12 signs of floods. DEM confirms the vulnerability.
Shanlow	Potential	Balcad	2.53896	45.48550	Image of JUN13 shows an indentation. The surrounding area seems to be affected by floods. A previous breakage was reported in this area. DEM confirms vulnerability.
Sheekh Hintire	Potential	Balcad	2.55649	45.49291	In DEC2012 there are signs of floods very close to this point. Three previous breakage records are next to this point. DEM confirms that this is a vulnerable point
Timire	Potential	Jowhar	2.80621	45.53017	In June 2013 signs of flooding are present in the same area. Previous breakages have been reported here. The image of 29May14 shows that the surrounding area is flooded. In July 2014 the situation is back to normal.
Timire	Potential	Jowhar	2.81146	45.53574	The image of 20APR14 and the DEM show this is an area with high potential of floods. Previous records in the area confirm the vulnerability.
Tuugaarey	Potential	Balcad	2.66076	45.50033	Image of 27DEC13 shows water encroaching from this point. Overflows could occur.
War Gaab	Potential	Balcad	2.42595	45.46112	DEM shows that this is a vulnerable point. Signs of flooding have been identified through images of 2012-2013-2014
Warai	Potential	Jowhar	2.83744	45.53579	It is potential area for floods considering the DEM and that a previous breakage was present here. In DEC 2012 there are signs of a recent flood.

Xawaadley	Potential	Balcad	2.58008	45.48999	The image of FEB 2014 shows a canal starting from this point. DEM shows that this is a vulnerable point therefore vulnerable.
Xuddor	Potential	Jowhar	2.95269	45.52999	June 2013 shows potential to break. The village is about 50 m from this point. Previous records confirm vulnerability.
Kalundi	Potential	Jowhar	2.80105	45.52455	In May 2014 the area is flooded. Two points of previously reported breakages falls in the same area. DEM confirm high potentiality of flooding.
Muukay	Potential	Balcad	2.71844	45.51191	The image 20SEP13 shows a spillage from this point. The image of 27DEC13 shows that the breakage has been fixed. The image of March14 is not clear (clouds). There seems to be a new spillage
Axmed Cigoow	Closed	Jowhar	2.91509	45.53728	The image of 03JAN13 clearly shows a new embankment to close a breakage. The surrounding area is flooded probably due to this breakage in the past months.
Axmed Cigoow	Closed	Jowhar	2.90276	45.55139	Image of 2012 shows that a breakage was present in this point and major flooding signs are still clearly visible, starting from this points. Previous reports and DEM confirm the vulnerability
Balad	Closed	Balcad	2.62846	45.51104	Although covered by clouds, the analysis of the image acquired 27DEC13 shows that the area flooded and an open breakage was present. In Feb14 the breakage was closed and signs of the floods are evident. DEM and previous reports confirm the vulnerability.
Barey	Closed	Jowhar	2.81910	45.53567	This breakage caused floods in the past. The breakage is closed in Dec 2012, Sept13 & Feb14. In May 2014 the area is flooded again but the quality of the image (clouds and panchromatic) does not allow to assess if this breakage was open.
Barey	Closed	Jowhar	2.82973	45.53399	The image of SEP 2013 clearly shows a breakage. It is closed as of images acquired in Feb and May 2014.
Bullo Geesaale	Closed	Jowhar	2.82475	45.53522	In this point there is a breakage that is open as observed in the image of Sep 2013. In May 2014 the breakage is closed.
Gaalaay	Closed	Jowhar	2.84386	45.53237	Image of 29MAY14 shows a flooding, most probably coming from this point. The presence of trees hide the exact point. DEM shows that this is a vulnerable point. Information received from the field reported that breakage was closed.

Gaashaanle	Closed	Balcad	2.68068	45.50902	An overview of the area shows that a breakage was present in this point. The image of 28DEC12 shows a portion of embankment newly fixed. Noticed lack of trees and the presence of a previously reported breakages.
Hilo Axmadey	Closed	Jowhar	2.96893	45.52089	Breakage closed in 2012. The image of 2013 is covered by clouds in this area and no images of 2014 are available.
Kulmis-Weyne	Closed	Jowhar	2.93103	45.53068	June 2013 shows that from this point there was an overflow and the embankment is broken. The lower area around is flooded. No images for 2014 but field observers reported that the breakage was closed
Magadley	Closed	Jowhar	2.86052	45.52661	Comparing the image of 2012 and 3June13 it is evident that a breakage was there in 2013. Water spillage is no more present. In May 2014 the breakage is closed.
Moyka	Closed	Jowhar	2.76035	45.50120	The image of 28DEC12 shows a breakage newly closed. The image of 22SEP13 shows an overflow from this point causing a small spillage. On 18MAR14 the breakage is closed
Muku Dheere	Closed	Balcad	2.43536	45.46736	Image of 28DEC12 shows a breakage and water flowing from this point. Repaired in 2013. A new embankment was built in 2014.
Muukay	Closed	Balcad	2.72778	45.50924	The image of 20 SEP 13 shows evidence of a breakage (repaired) occurred sometime in 2013, given that in 2012 it was not there. Image 20SEP13 shows the repair.
Muukay	Closed	Balcad	2.71587	45.51124	In this point a major breakage occurred before 2012 as can be seen through an overview of the area (shape of streams branching from here).
Tuugaarey	Closed	Balcad	2.65788	45.49932	In this point there was a breakage in 2012 which caused a major flood. An embankment was put up in place and according to the images of 2013 and 2014 no more flooding occurred afterward.



Latest findings from a joint assessment by the Food Security and Nutrition Analysis Unit for Somalia (FSNAU), the Famine Early Warning Systems Network (FEWS NET) and other partners indicate that an estimated 1 025 000 people across Somalia are experiencing acute food security Crisis and Emergency (IPC Phases 3 and 4) from August to December 2014. Over 2.1 million additional people are in acute food insecurity Stressed (IPC Phase 2) conditions. The findings also indicate that an estimated 218 000 children under the age of five are acutely malnourished, 43 800 of them severely malnourished and at even higher risk of morbidity and death (prevalence). These numbers of malnourished children are expected to increase to 393 000 and 76 800, respectively by the end of the year (incidence).

A Comparison of Key Indicators between the Pre-Famine Period (pre-Gu 2011), Famine (Gu 2011) and Recent Seasons:

Key Indicators for Comparison	Deyr 2009/10	Gu 2010	Deyr 2010/11	Gu 2011 (Famine)	Gu 2013	Deyr 13/14	Gu 2014	Deyr 2014/15
Climite/rainfall in southern regions	Near to above normal rainfall	Normal to above normal rainfall	Below normal Worst drought in 60 years (La Nina)	Below normal	Near to above normal	Mostly near to above normal	Mostly near to below normal	Near to above normal rainfall forecast (El Nino)
Cereal crop production in southern regions (Tonnes)	126 400	198 200	17 900	48 500	128 200	87 800	89 500	
Consumer Price Index (CPI) for southern regions (March 2007=100)	192	215	254	358	187	211	235	
Average cereal price for southern regions	7 240	8 490	12 162	18 789	7 113	7 719	11 099	
Average daily labour wage for southern regions (in Somali Shillings)	82 497	86 905	75 720	69 951	92 126	87 604	84 399	
Average Terms of Trade (daily labour wage to cereals) for southern regions in Kilograms	11.4	10.2	6.2	3.7	13.0	11.3	7.6	
Average local goat price for southern regions (Thousands of Somali Shillings)	804.2	923.3	653.1	613.7	1 129.0	1 143.8	1 042.9	
Median Global Acute Malnutrition-GAM rates (South-central)	21.2	15.95	25.85	39.5	16.1	15.1	17.3	
Median Severe Acute Malnutrition-SAM rates (South-central)	5.4	2.05	5.2	17.2	3.9	2.8	3.7	
Median Crude Death Rate-CDR (South-central)	0.9	0.80	0.34	1.85	0.38	0.76	0.6	
Humanitarian access in Southern Somalia (# of districts with access coefficient 1-10)	Dec 2009: 16	Jun 2010: 12	Nov 2010: 25	Jun 2011: 22	Mar 2013: 22	Sep 2013: 22	Jun 2014: 24	
Actual funding for humanitarian assistance requirement as stated in UN Consolidated Appeals (CAPs)	as % of UN CAP requirements	2009: 66%	2010: 69%	2011: 89%	2013: 48%		Jul 2014: 29%	
	In Millions of US \$	2009: 663.9	2010: 490.8	2011: 1 350.0	2013: 714.4		July 2014: 458.4	

Notes: 1/Gu is the main rainy season in Somalia that extends from April to June; Deyr is the secondary rainy season from October to December. 2/ Prices and Terms of Trade (TOT) are for December and July of each year. 3/Access coefficient 1-10=access extremely restricted/denied (data source: OCHA reports and maps).4/Data source for humanitarian assistance: OCHA Financial Tracking Service.

At present, there are no famine conditions anywhere in Somalia, nor are they imminent. However, the current trajectory of key food security and nutrition related indicators is a major concern (see table above). Several of the indicators observed in Gu 2014 are worse or as bad as they were in Gu 2010 - one year before the famine declaration of July 2011. In order to mitigate this situation, 1) timely and adequate delivery of life saving humanitarian assistance between now and the end of the year, 2) timely arrival of the expected near to above normal Deyr (October-December) rains, and 3) improved humanitarian access and easing of the siege that continues to disrupt trade flow into urban areas recently recaptured by the Government will be crucial.

During the 2011 famine, an estimated 258 000 people died in the context of a severe drought, large-scale food insecurity and in the absence of a timely and adequate humanitarian response. One of the key lessons from the 2011 famine is that an early action, based on available early warning information, could have prevented some of these deaths. Similarly, the need for early action now to avert a further deterioration of the current food security and nutrition situation across Somalia is critical.

